



IAS PARLIAMENT

Information is Empowering
A Shankar IAS Academy Initiative

Prelim Bits 31-10-2018

Global Soil Biodiversity Atlas

\n\n

\n

- The Atlas is prepared by World Wide Fund for Nature.

\n

- It indicates risk index which takes in to account, threats from loss of above-ground diversity, pollution and nutrient over-loading, over-grazing, intensive agriculture, fire, soil erosion, desertification and climate change.

\n

- The two key drivers of biodiversity loss were the over exploitation of natural resources and agriculture.

\n

- The risk index shows India among countries whose soil biodiversity faces the highest level of risk.

\n

- The report highlighted that, while India's per capita ecological footprint was less than 1.75 hectares/person (which is in the lowest band, among countries surveyed) its high population made it vulnerable to an ecological crisis.

\n

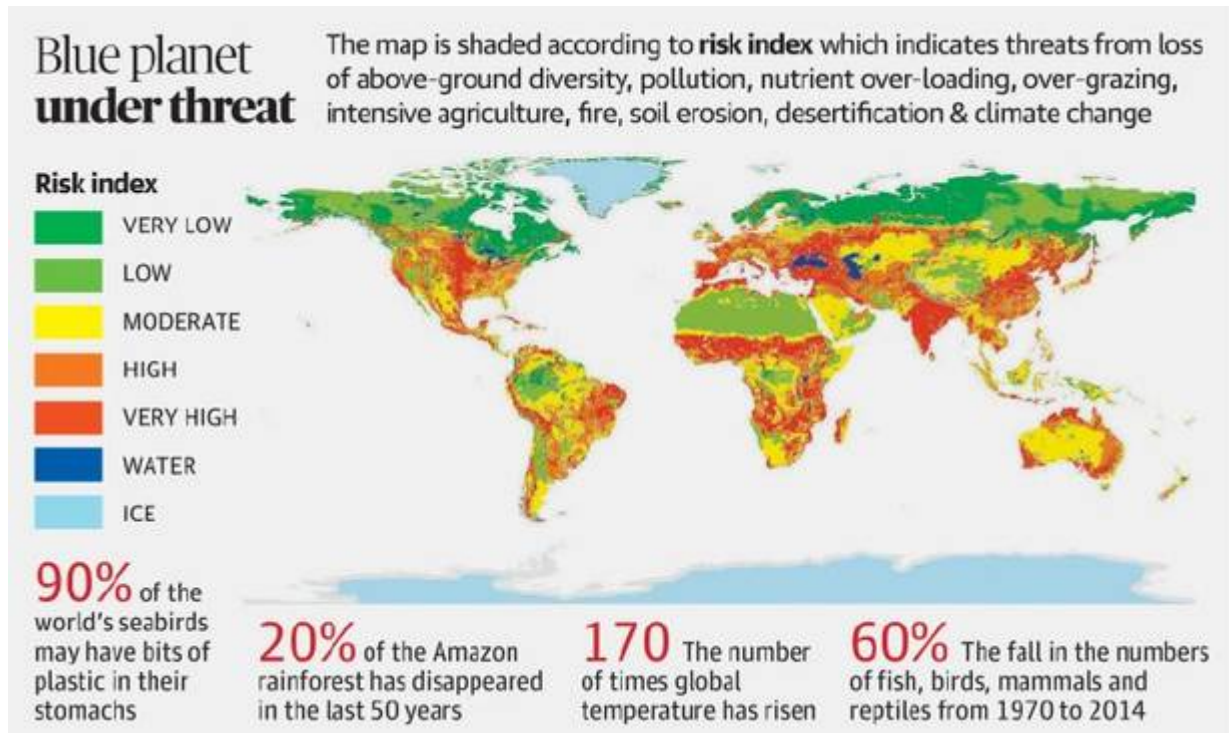
- The other countries which are placed along with India - Pakistan, China, several countries in Africa and Europe, and most of North America.

\n

- The findings under this are part of the bi-annual Living Planet Report 2018.

\n

\n\n



\n\n

Financial Stability and Development Council

\n\n

\n

- The council has met recently to discuss the issue of real interest rate, current liquidity situation.

\n

- FSDC was established in 2010 with Union Finance Minister as its Chairman.

\n

- Its members include

\n

\n\n

- i. the heads of financial sector regulators (RBI, SEBI, PFRDA, and IRDA)

\n\n

- ii. Finance Secretary, Department of Economic Affairs

\n\n

- iii. Secretary, Department of Financial Services

\n\n

- iv. Chief Economic Adviser

\n\n

v. Chairman of the Insolvency and Bankruptcy Board

\n\n

\n

- FSDC has two core functions:

\n

\n\n

i. to perform as an apex level forum to strengthen and institutionalize the mechanism for maintaining financial stability

\n\n

ii. to enhance inter-regulatory coordination and promote financial sector development in the country

\n\n

\n

- It focus on financial literacy and financial inclusion.
- It monitor macro-prudential supervision of the economy and also assess the functioning of the large financial conglomerates.
- FSDC sub-committee is chaired by the Governor of RBI.

\n

\n\n

Commercial Paper

\n\n

\n

- Commercial Papers are issued by companies with high-quality debt ratings for raising money to meet their short-term liabilities.
- Corporations, financial institutions, wealthy individuals and money market funds are usually buyers of commercial paper.
- It is usually issued at a discount from face value and reflects prevailing market interest rates.
- Maturities on commercial paper are usually no longer than 9 months.
- Unlike banks, Non-Banking Financial Companies (NBFC) do not have access to low-cost public deposits and have to heavily rely upon commercial paper

and commercial debt markets.

\n

- Banks and Mutual Funds are the main source of funding through commercial papers to NBFCs and housing finance companies.

\n

- While large MFIs have access to bank finance, the mid-sized and smaller ones depend on funds from NBFCs.

\n

- Small and mid-size NBFCs and Micro Finance Institutions (MFI) are going to face the liquidity crunch due to redemption of commercial papers due in November-March.

\n

- Anticipating liquidity crunch, the RBI has announced Rs. 40,000-crore liquidity infusion in November through open market operations.

\n

\n\n

Dal-Nageen Lake

\n\n

\n

- J&K administration has appointed an official for conducting a comprehensive bathymetric survey (study of underwater depth of lake or ocean floors) of the Dal-Nageen lake.

\n

- The Nageen lake in Srinagar is a deep blue water offshoot of the Dal lake that is interconnected by a thin causeway.

\n

- The lake is located to the east of the city of Srinagar, at the foothill of the Zabarwan Mountain.

\n

- The Nageen lake is surrounded by a large number of willow and poplar trees. Hence, it has been referred as a "nageena", which means "the jewel in the ring".

\n

\n\n

Multidimensional Poverty Index

\n\n

\n

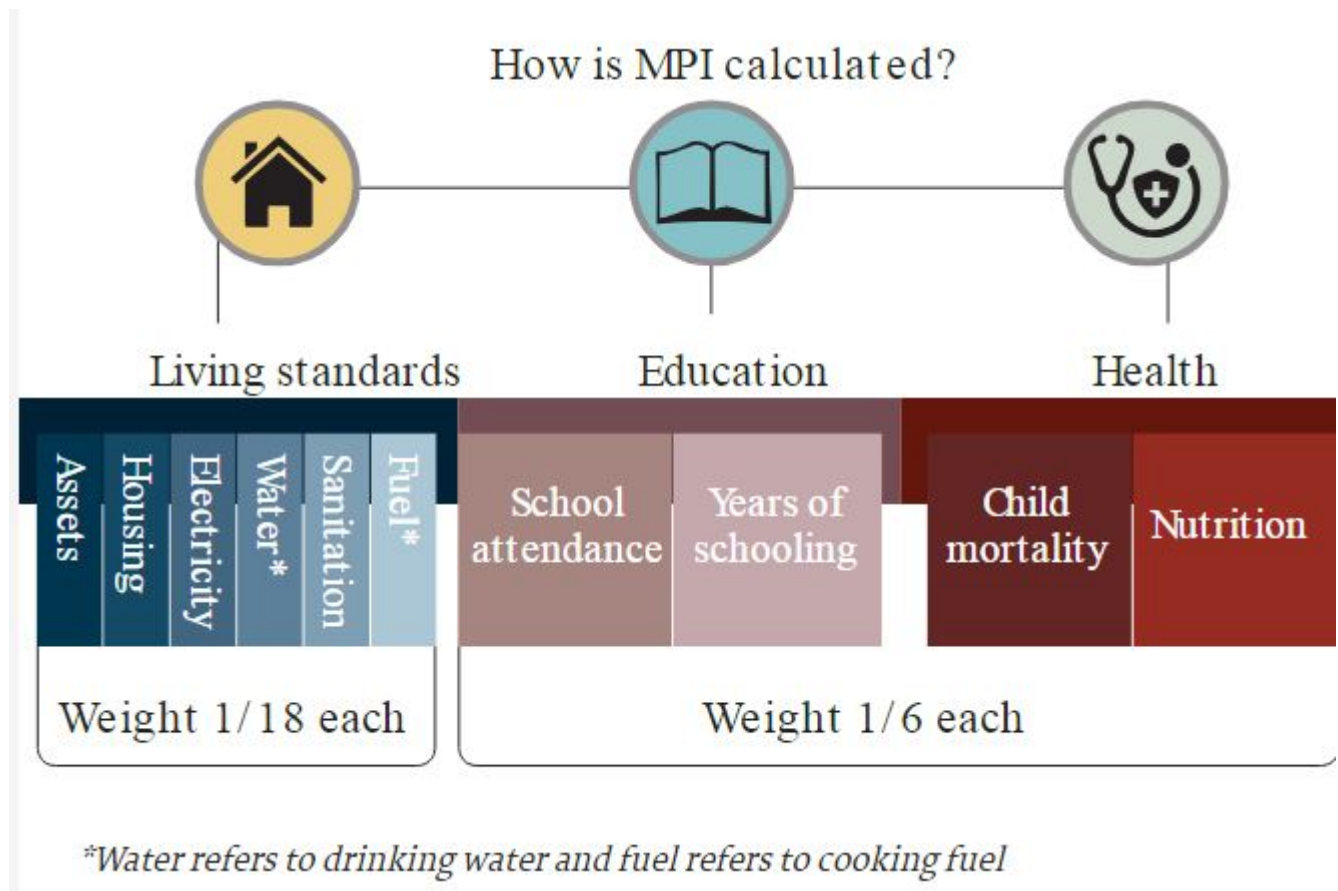
- MPI is a measure that takes into account the incidence of poverty and the extent of deprivation.

\n

- It is calculated by Oxford Poverty and Human Development Initiative and United Nations Development Programme (UNDP).

\n

\n\n



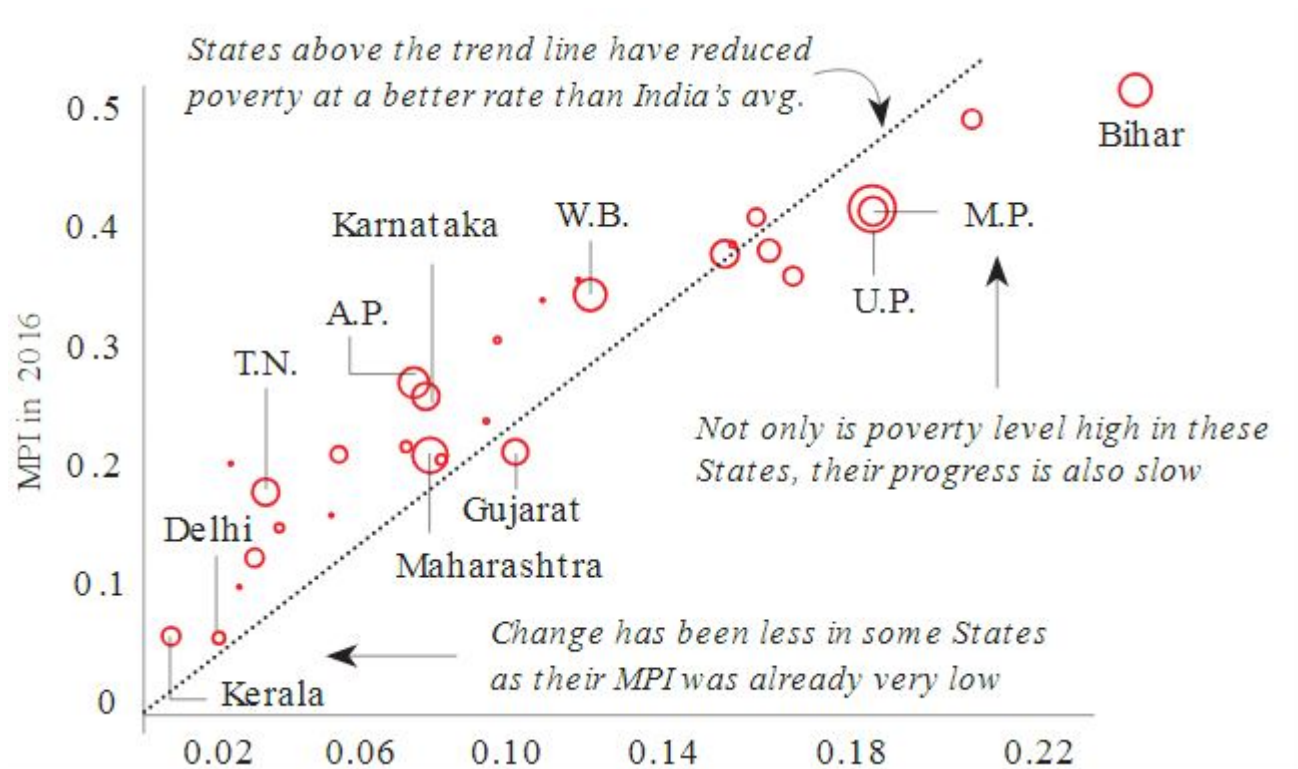
\n\n

\n

- The MPI value ranges between 0 and 1 and the value of 1 indicates the highest deprivation level, while 0 indicates the lowest.
- It has been calculated for 105 developing economies.
- India's MPI stood at 0.121 in 2016, half of what it was in 2006.
- India's MPI is lower than the global average of 0.159 and the South Asian countries but higher than BRICS countries (excluding Russia).

\n

\n\n



\n\n

\n\n

Source: The Hindu

\n\n

\n\n

\n



IAS PARLIAMENT

Information is Empowering

A Shankar IAS Academy Initiative