



# IAS PARLIAMENT

*Information is Empowering*

A Shankar IAS Academy Initiative

## Prelim Bits 31-10-2022 | UPSC Daily Current Affairs

### Monetary Policy Committee's Inflation report

*For the first time since the implementation of the monetary policy framework in 2016, the Reserve Bank will submit an inflation report to the government.*

- Under the **Reserve Bank of India Act of 1934 (amendment 2016)**, RBI is entrusted with the responsibility of conducting monetary policy in India.
- Under RBI Act, the central government, in consultation with the RBI, determines the inflation target in terms of Consumer Price Index (CPI), once in every five years.
- The [current inflation target](#) is to keep retail inflation at 4% with a tolerance of 2% on either side, for a period of 5 years (April 1, 2021 to March 31, 2026.)
- For three consecutive quarters beginning January 2022, RBI has failed to keep the retail inflation rate below 6%.
- **Failure to Maintain Inflation Target:** Section 45ZN of the Act deals with failure to maintain the inflation target.
- The Central Government has notified the following as the factors that constitute failure to achieve the inflation target.
  - a. The average inflation is more than the upper tolerance level of the inflation target for any three consecutive quarters; or
  - b. The average inflation is less than the lower tolerance level for any three consecutive quarters.
- Where the Bank fails to meet the inflation target, it shall submit a **report to the Central Government** stating.
  1. The reasons for failure to achieve the inflation target.
  2. Remedial actions proposed to be taken by the Bank and
  3. An estimate of the time-period within which the inflation target shall be achieved pursuant to timely implementation of proposed remedial actions.

### Monetary Policy Committee

- The [Monetary Policy Committee](#) (MPC) determines the policy repo rate required to achieve the inflation target.
- Section 45ZB of the amended RBI Act, 1934 provides for an monetary policy committee to be constituted by the Central Government.
- MPC is a 6 member committee with the Governor of the Reserve Bank of India ex-officio Chairperson.
- The committee consists of 3 members from RBI (including RBI Governor and Deputy

Governor) and 3 members appointed by the Central Government.

- The MPC is required to meet at least four times in a year. The quorum for the meeting of the MPC is four members.
- **Related Topics** - [Monetary Policy](#)

## References

1. [The Hindu - For first time, RBI's rate-setting panel to discuss inflation report this week](#)
2. [RBI - Monetary Policy](#)

## Miyawaki forest and Maze Garden

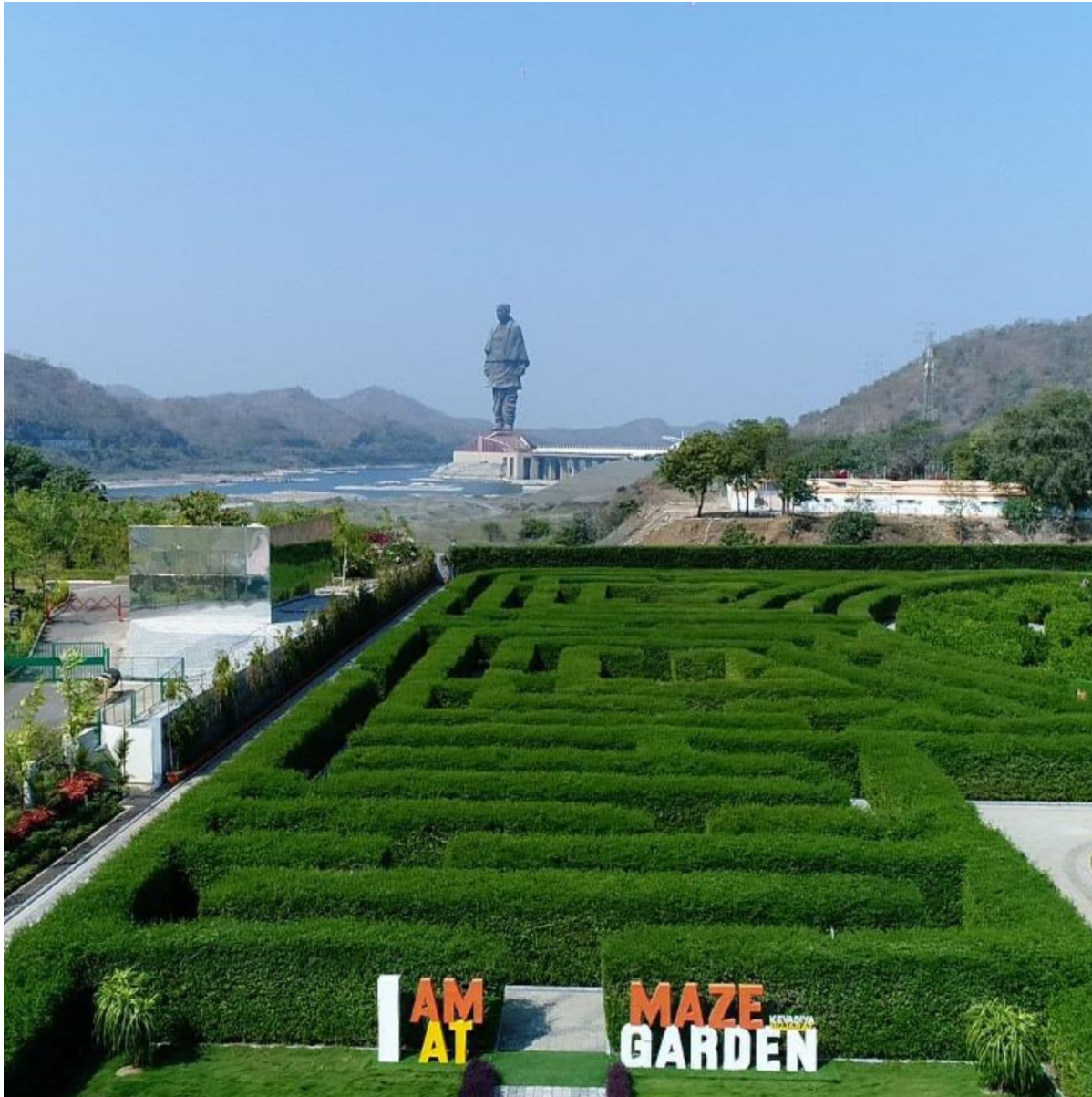
*The Prime Minister inaugurated a 'Miyawaki' forest and a Maze Garden, in Gujarat's Ekta Nagar near the Statue of Unity.*

- The Maze Garden has been built in the shape of '**Yantra**' that emanates positive energy.
- The Maze (labyrinth) Garden, spread across 3 acres with a pathway of 2,100 metres, is the largest maze garden in the country.
- A special watchtower has also been built to give a panoramic view of the entire garden.
- A 'Miyawaki' forest had been created near this Maze Garden.
- The location chosen for the Miyawaki forest was originally used as a dumping site.

*The 182-meter high Statue of Unity in Ekta Nagar is the tallest statue in the world.*

## Miyawaki Technique

- Miyawaki is an **afforestation technique** to create urban forests based on the work of Dr Miyawaki in the 1980s.
- The Miyawaki forest gets its name from the technique developed by Japanese botanist and ecologist Dr Akira Miyawaki.
- Miyawaki forests are tiny forests grown on small plots of land in 2 to 3 years and are self-sustaining.
- **Method** - It involves planting saplings close to each other, which develops into a dense urban forest.
- Three layers of greens - shrubs and undergrowth, medium-height trees and taller canopies are integral components of the Miyawaki forests.
- Mulching, natural water retention and perforation material like rice husk and use of organic compost, cow dung support their growth.
- Before plantation, local agro-climatic conditions are studied. Around 3 to 4 saplings per sq. m of 30 or more native varieties of plants are planted.
- **Advantages** - The growth of plants is 10 times faster using this method and as a result the forest developed is 30 times denser.
- Through the Miyawaki method, a forest can be developed in just 2 to 3 years while it takes at least 20 to 30 years through the traditional method.



## References

1. [PIB - PM dedicates Maze Garden and Miyawaki Forest in Ekta Nagar, Gujarat](#)
2. [PM INDIA - PM dedicates Maze Garden and Miyawaki Forest in Ekta Nagar, Gujarat](#)
3. [Business Standard - PM Modi dedicates maze garden, houseboat service near 'Statue of Unity'](#)

## AMR Salmonella

*Recent studies have found the emergence of multi-drug resistant Salmonella typhimurium DT104 that causes infections in humans and cattle.*

- *Salmonella enterica* is a gram-negative bacterial pathogen.
- Salmonella bacteria can be typhoidal and non-typhoidal.
- The Salmonella serovars cause diseases like typhoid or paratyphoid fever, salmonellosis, gastroenteritis, and diarrhoea.
- **AMR in Salmonella** - Resistance to multiple antibiotics is especially common in Salmonella serovars Typhimurium and Newport.
- Many strains of *S. Typhimurium* Definitive Type (DT) 104 are resistant to drugs



ampicillin, chloramphenicol, streptomycin, sulphonamides, and tetracycline.

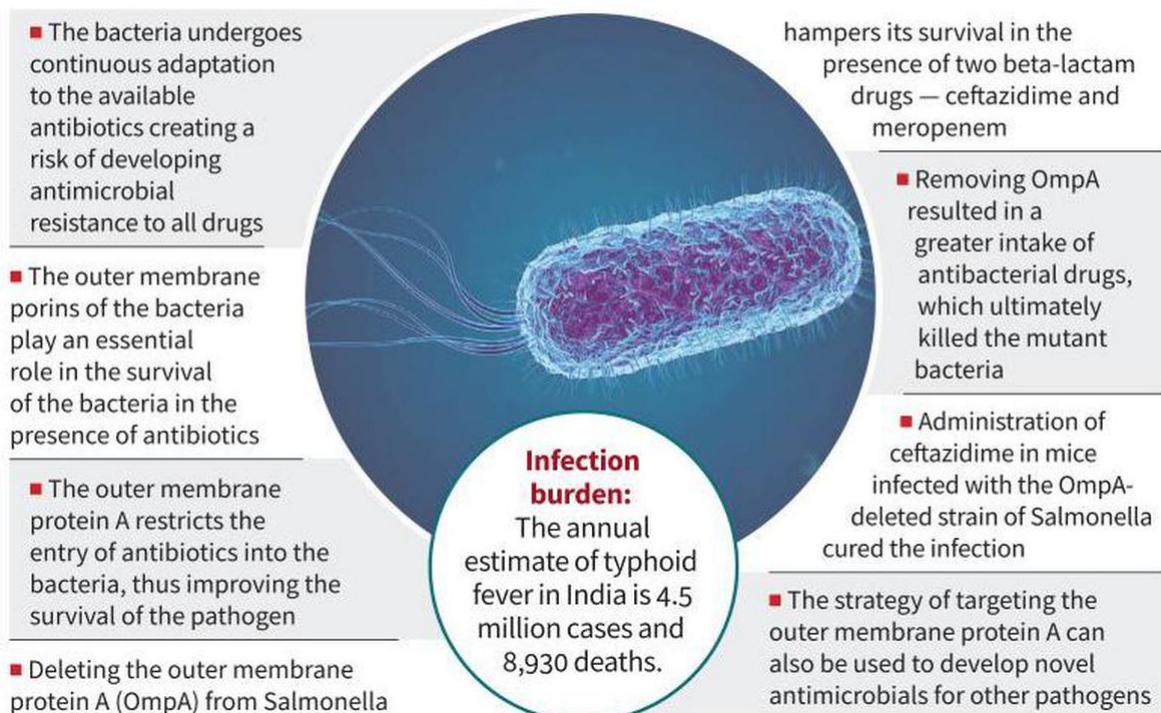
- The emergence of drug resistant *Salmonella* serovars has increased the difficulties in curing *Salmonella*-induced illnesses worldwide.
- **Study Outcomes** - The study found out a new way to combat AMR *Salmonella*.
- The outer membrane protein A (OmpA) of *Salmonella* plays essential role in the survival of the pathogen under antibiotic treatment.
- Removing OmpA resulted in a greater intake of antibiotics and killed the mutant bacteria by disrupting its outer envelope.

## Diseases caused by *Salmonella* bacteria

- **Typhoid Fever** is a gastrointestinal infection caused by *Salmonella enterica typhi* bacteria.
- It is transmitted from person to person through the faecal-oral route where an infected individual passes the infection to another person when handling food and water.
- **Salmonellosis** is a non-typhoidal food-borne disease in humans.
- It is generally contracted through the consumption of contaminated food of animal origin.
- If a live bacteria enters the body, it can attach to the cells lining the intestines where they produce toxins and attack the intestinal cells.
- **Related Topics** - [Drug-resistant Typhoid](#), [AMR](#), [National Action Plan to Combat AMR](#), [Antibiotic Resistant Bacteria](#), [MDR-TB](#)

## Neutralising multi-drug resistant *Salmonella*

The bacteria causes bloodstream infection in malnourished and immunocompromised people



## References

1. [The Hindu - A new target found to combat AMR \*Salmonella\*](#)

## Machchhu River and Morbi Bridge

*The newly-restored colonial-era suspension bridge over Machchhu River collapsed after 5 days of reopening.*

### Morbi Bridge

- Locally known as the **Julto Pool**, it is one of the tourist attractions of Morbi district in Gujarat.
- It had been closed for renovation for 6 months and reopened on the Gujarati New Year day.
- The bridge was 1.25 metres wide and spanned 233 metres.
- The bridge was originally built by the erstwhile princely state of Morbi and was considered a marvel of British engineering.
- **Sir Waghji Thakor**, who ruled Morbi till 1922, was inspired by the colonial influence and decided to construct the bridge.
- The bridge was built in 1880 to connect Darbargadh Palace with Nazarbag Palace.

*Morbi is an industrial town in Gujarat with thousands of factories making ceramic tiles and bathroom products and wall clocks.*

### Machchhu River

- Machchhu River originates from Madla hills (Jasdan) and meets in little Rann of Kuchchh.
- It is a North flowing river of Saurashtra in Gujarat state.
- The total length of this river from its origin to its outfall is 140 km.
- There are 2 dams located on river Machchhu River - Machchhu-I & Machchhu-II.

### References

1. [The Hindu - Death toll rises to 141; There will be no laxity in rescue and relief operations, says PM Modi](#)
2. [Live Mint - Morbi cable bridge collapse in Gujarat live updates: Death toll rises to 132. PM Modi says 'pained' by tragedy](#)
3. [Gujarat Tourism - Hanging Bridge Morbi](#)

## UNSC Counter-Terrorism Committee

*India hosted the UNSC Counter-Terrorism Committee's meeting for two days in Mumbai and Delhi focusing on countering the use of new and emerging technologies for terrorist purposes.*

- The UNSC Counter-Terrorism Committee (CTC) meet **focused** on-
  1. Online radicalisation and terror recruitment,
  2. Terror financing through crypto-currency and virtual assets, and
  3. Unmanned Aerial System (UAS) use including drones for terror strikes, transporting drugs and arms.

- The host, India emphasized that the global threat of terrorism is the **gravest threats to humanity**.
- The CTC unanimously adopted the '**Delhi Declaration** on countering the use of new and emerging technologies for terrorist purposes'.
- The declaration aims to cover the main concerns surrounding the abuse of drones, social media platforms, and crowdfunding, and create guidelines that will help to tackle the growing issue.
- The declaration will provide details on how the CTC and its executive directorate (CTED) will tackle these issues.

## Counter-Terrorism Committee

- The UNSC established a dedicated Counter-Terrorism Committee (CTC) of the Council in the wake of 9/11 attack.
- The UNSC unanimously adopted **Resolution 1373** (2001) for the establishment of Counter-Terrorism Committee (CTC).
- Counter-Terrorism Executive Directorate (CTED) carries out its policy decisions and conducts expert assessments of the 193 United Nations Member States.
- At present India is chairing the CTC for the second time.

## United Nations Security Council

- The [United Nations Security Council](#) (UNSC) established under the United Nations Charter has the primary responsibility for maintaining international peace and security.
- The Security Council has taken permanent residence at the United Nations Headquarters in New York City.
- The Security Council has the power to make binding decisions on member states.
- The Council has 15 members - 5 permanent members and 10 non- permanent members.

*India is a non-permanent member to UNSC from the Asia-Pacific Group for a 2-year term from 2021.*

## References

1. [Indian Express - UNSC Counter Terrorism Committee meet: US, UK, France call for end to Ukraine war, Russia says West supplying arms to Kyiv](#)
2. [Hindustan Times - 'Beautiful thing about India...': Top UN counter-terrorism official's praise](#)
3. [UNSC - Counter Terrorism Committee](#)



# IAS PARLIAMENT

*Information is Empowering*

A Shankar IAS Academy Initiative