



Role of Geography and Weather in Delhi's Air Pollution

Why in news?

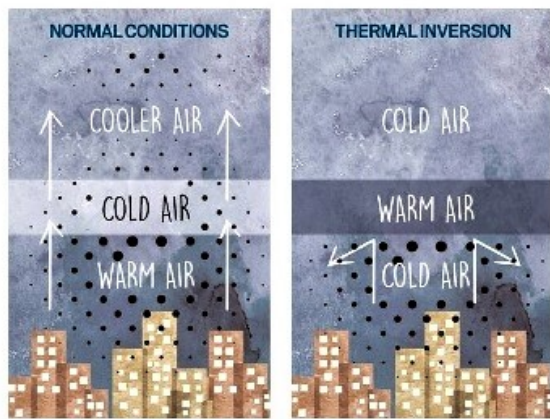
As the Air Quality Index (AQI) in Nation Capital Region dipped to the 'severe' category, Stage 4 of the Graded Action Plan (GRAP) has kicked in.

What exactly is the cause for Delhi's air pollution?

- Air pollution in Delhi, and the whole of the Indo Gangetic plains, is a complex phenomenon that is dependent on a variety of factors.
- **Dust** - Road dust along with construction and demolition dust is the most prominent polluter of air.
- **Vehicles** - Vehicles are the second largest polluter, with 20 % of PM 2.5 load and approximately 9 % of PM 10.
- **Thermal plants** - The coal thermal plants in the immediate 300-km periphery of Delhi and industrial point sources also contribute to the pollution.
- **Open burning** - Open burning of waste by neighbourhoods and municipalities, stubble burning, Diwali crackers, etc. adds to this issue.
- **Geography** - The geographical nature of the region makes Delhi a pollution trap with weather and wind speed playing a key role.

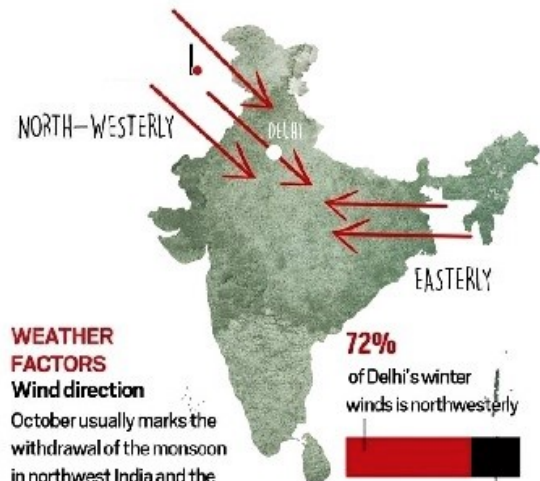
What is the role of weather in Delhi's air pollution?

- **Wind direction** - During the southwest monsoon, the prevalent direction of the wind is easterly.
- The winds travel from over the Bay of Bengal, carrying moisture and rainfall to this part of the country.
- Once the monsoon withdraws, however, the predominant direction of the winds changes to north-westerly.
- These winds carry particulate matter (essentially smoke and soot) from crop-burning in Punjab to the area above Delhi, and then onward down the Gangetic basin.
- **Fall in air temperature** - As it gets cooler, the inversion height (the layer beyond which pollutants cannot disperse into the upper atmosphere) comes down.
- When that happens, larger concentrations of pollutants in the air hang closer to the surface, and lead to worsening AQIs.
- In summer, the ventilation is very strong and the land is so hot that pollutants rise high and dissipate.
- But in October-November, the pollutants are like a lid sitting above the entire Indo-Gangetic basin, perhaps at a height of 1 km.



Dip in temperature

When the temperature dips, it lowers the inversion height, which is the layer beyond which pollutants cannot disperse into the upper layer of the atmosphere. The concentration of pollutants in the air increases when this happens



WEATHER FACTORS

Wind direction

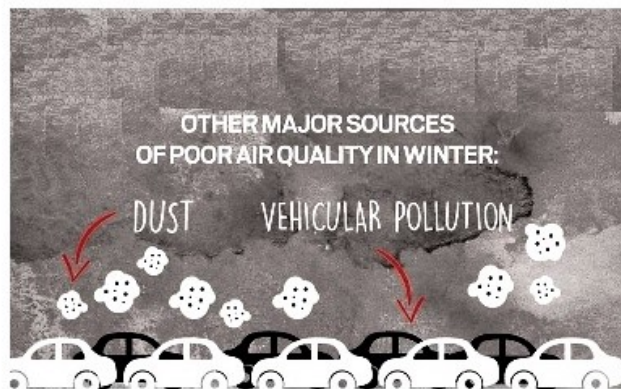
October usually marks the withdrawal of the monsoon in northwest India and the direction of wind changes from easterly to north-westerly. The storms carrying dust arrive from Rajasthan, and, sometimes, Pakistan and Afghanistan

72% of Delhi's winter winds is north-westerly

28% comes from the Indo-Gangetic plains

Source: National Physical Laboratory

DELHI AIR POLLUTION



Cold, dry weather means dust is prevalent in the entire region



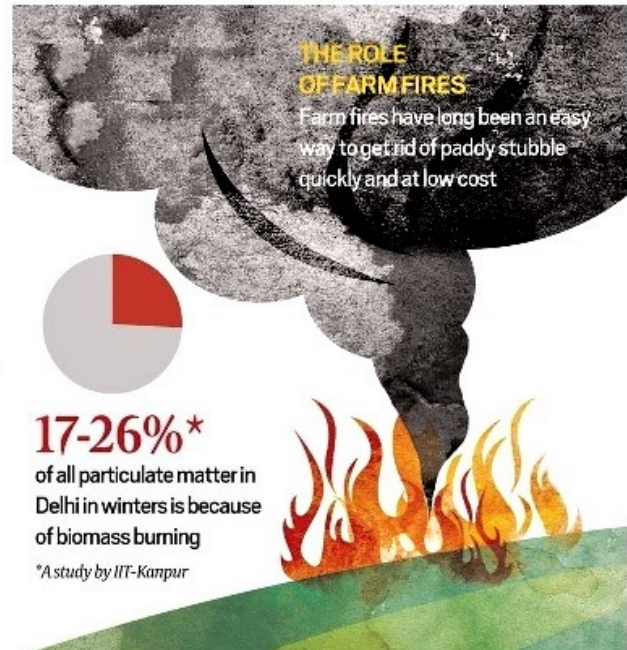
Dust pollution contributes

56%
of the PM10



Vehicular pollution contributes

20%
of the PM2.5



What about the geography of Delhi?

- Geography plays a major role not just in Delhi, but also in the Indo-Gangetic basin that extends from Haryana in the west to the middle of Bihar in the east.
- This area is like a long valley surrounded by higher structures (Malwa and Deccan plateaus, Aravalli Mountains, the Himalayas).
- This topography makes the Indo-Gangetic plain similar to California, which is peculiarly susceptible to pollution.

References

1. [The Indian Express | Delhi's geography and weather conditions are also fouling its air](#)
2. [The Indian Express | What is GRAP, Delhi-NCR's action plan to combat rising air pollution?](#)











Quick facts

Graded Response Action Plan

- GRAP is a set of emergency measures that kick in to prevent further deterioration of air quality once it reaches a certain threshold in the Delhi-NCR region.
- The GRAP was formulated in 2016 and approved by the Supreme Court in the same year.
- It was notified in 2017 by the Centre, and draws its authority from this notification.
- It was planned after several meetings of EPCA (Environment Pollution (Prevention and Control) Authority) with state government officials and experts.
- The plan is incremental in nature.
- Only when the air quality shifts from poor to very poor, the measures listed have to be followed.
- If air quality reaches the severe stage, [GRAP](#) talks about shutting down schools and implementing the odd-even road-space rationing scheme.

HOW THE GOVT WILL WORK TO CURB BAD AIR

Graded Response Action Plan (GRAP) will be put in place from today and will be in force until February-end, 2018. People would be made aware about this through mass media

CATEGORY	ACTION PLAN
 Moderate to Poor PM2.5—61-120 µg/m3 PM10—101-350 µg/m3	<ul style="list-style-type: none"> ➤ Stop garbage burning, impose heavy fines ➤ Enforce pollution regulations in all industries ➤ Do periodic mechanised road sweeping ➤ Stop plying of visibly polluting vehicles ➤ Enforce SC order on diversion, ban on crackers ➤ Ensure fly ash ponds are watered every alternate day from Mar – May ➤ Use apps to inform people and register complaints 
 Very Poor PM2.5—121-250µg/m3 PM10—351-430 µg/m3	<ul style="list-style-type: none"> ➤ Stop use of diesel gensets ➤ Enhance parking fee by 3-4 times ➤ Increase bus and Metro services ➤ Stop use of coal/firewood in hotels and restaurants ➤ RWAs to provide electric heaters to security staff to stop bonfires ➤ Issue media alerts and advisories  
 Severe PM2.5—250 µg/m3 PM10—430µg/m3	<ul style="list-style-type: none"> ➤ Close hot mix plants, stone crushers ➤ Shut down Badarpur power plant and maximise generation from natural gas-based plants ➤ Intensify public transport ➤ Mechanised cleaning of road and sprinkling of water 
 Emergency PM2.5—300µg/m3 PM10—500 µg/m3 <i>(persist for 48 hours or more)</i>	<ul style="list-style-type: none"> ➤ Stop entry of trucks except those carrying essential commodities ➤ Stop construction ➤ Introduce odd-even scheme without exemptions ➤ Task Force to decide on additional steps  



IAS PARLIAMENT
Information is Empowering

A Shankar IAS Academy Initiative