

Addressing gender inequality in education requires providing social, financial and emotional support to the girl child in the country, Explain?

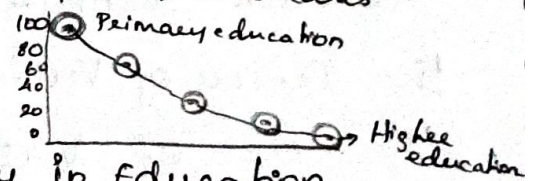
Q. INTRODUCTION:

Gender Inequality in India is a major issue which must be addressed. Due to the rising pandemic and continuous lockdowns, there is increase in number of dropouts in schools, and also rising trends of child labour, trafficking and child marriage, of which the predominantly affected were girl children.

GENDER INEQUALITY:

It is estimated that over 2.4 crore girls are on the verge of dropping out of schools, due to COVID-19 pandemic.

Based on AISHE India Survey on Higher Education (AISHE) report, the enrollment of children, decreases from primary to Higher Education.



To address, these gender inequality in Education, girl children should be provided with social, financial & Emotional support

Various measures taken by our Government to address these issues like

* National Scheme of Incentive of Girls for Secondary Education, This would encourage their enrollment in education, and thereby eliminating inequalities.

→ Pragati scholarship scheme for girls in Technical education.

→ Community learning programmes should be initiated, As the studies during Ebola pandemic portray that continuous engagement with educational activities results in decreased dropout.

→ "SAKSHAM BITIYA" an initiative by NITI AAYOGI, where children were trained in socio economic and ethical learning. We must come up with various initiatives like this to bring down the drop out rates.

→ Teachers should be trained for providing economic & social support to children and thereby encouraging their families for persuasion of education

→ Special education zones, need to be established in areas, which is backward in education.

→ National Education Policy 2020 has come up with "Gender inclusion fund", This fund should be properly utilized to promote [STEM] education

→ For Greenfield projects in higher education, 60% funding can be assessed as viability gap funding from state and Central Governments.

→ "Behavioural Insights Unit" must be established, to address social issues and to eliminate all sorts of Gender inequalities

Conclusion:

Education is the tool for women, by which she can overcome all sorts of disabilities in the society. An educated women plays a vital role in social & economic development, Hence, these gender Inequality measures should be rightly addressed & promote women education & empowerment